

POPULATION STUDIES CENTER NEWSLETTER

Coming Very Soon: Useful Simplifications to the Common Rule for Research Involving Human Subjects

The Department of Health and Human Services has finalized revisions to the Common Rule. The final Rule was published on January 19, 2017 and goes into effect on **January 19, 2018**. The purpose of revising the Common Rule is to better protect human research subjects while reducing administrative burden and delay in the IRB approval process. It is anticipated that the revised Common Rule will simplify and enhance the current institutional review board process. For more details about the new rules and to participate in a [one question survey](#) please go to the [IRB & Human Subjects page](#) on the PSC website.



National Science Foundation
WHERE DISCOVERIES BEGIN

Upcoming Opportunity: NSF Webinar

On **December 8th** at 2pm EST NSF will host a free webinar to go over the newly revised [Proposal & Award Policies & Procedure Guide \(PAPPG\)](#). The new PAPPG will be effective for proposals submitted, or due, on or after January 29, 2018. Significant changes include the addition of a new eligibility subcategory on international branch campuses of U.S. Institutions of Higher Education, a revision of eligibility standards for foreign organizations, and an increase in the Budget Justification page limitation from three pages to five pages. Register for the webinar [here](#).



Last PSC Colloquium of 2017: Rebeca Wong
"The Mexican Health and Aging Study (MHAS): evolution and research opportunities over more than 15 years of the study"

December 11th • 12-1pm • room 103 McNeil

Long time Malawi Collaborators visit the PSC

This week [Victor Mwapasa](#) and [Chiwoza Bandawe](#) from the University of Malawi College of Medicine visited the University of Pennsylvania. [Hans-Peter](#) and [Iliana Kohler](#) have written with Victor and Chiwoza about the [Malawi Longitudinal Study of Families and Health](#) for several years. The group's research has focused on the relationship between HIV prevalence, transmission and disclosure and family health. Recently Hans-Peter, Iliana, Chiwoza, and Colin Payne authored a paper about the [Demography of Mental Health Among Mature Adults in a Low-Income, High-HIV-Prevalence Context](#). This summer a team of researchers including Penn PhD students went to Malawi to train and do data collection. The collaborators will meet on Friday to discuss current research and the PSC could not be more pleased to host them.

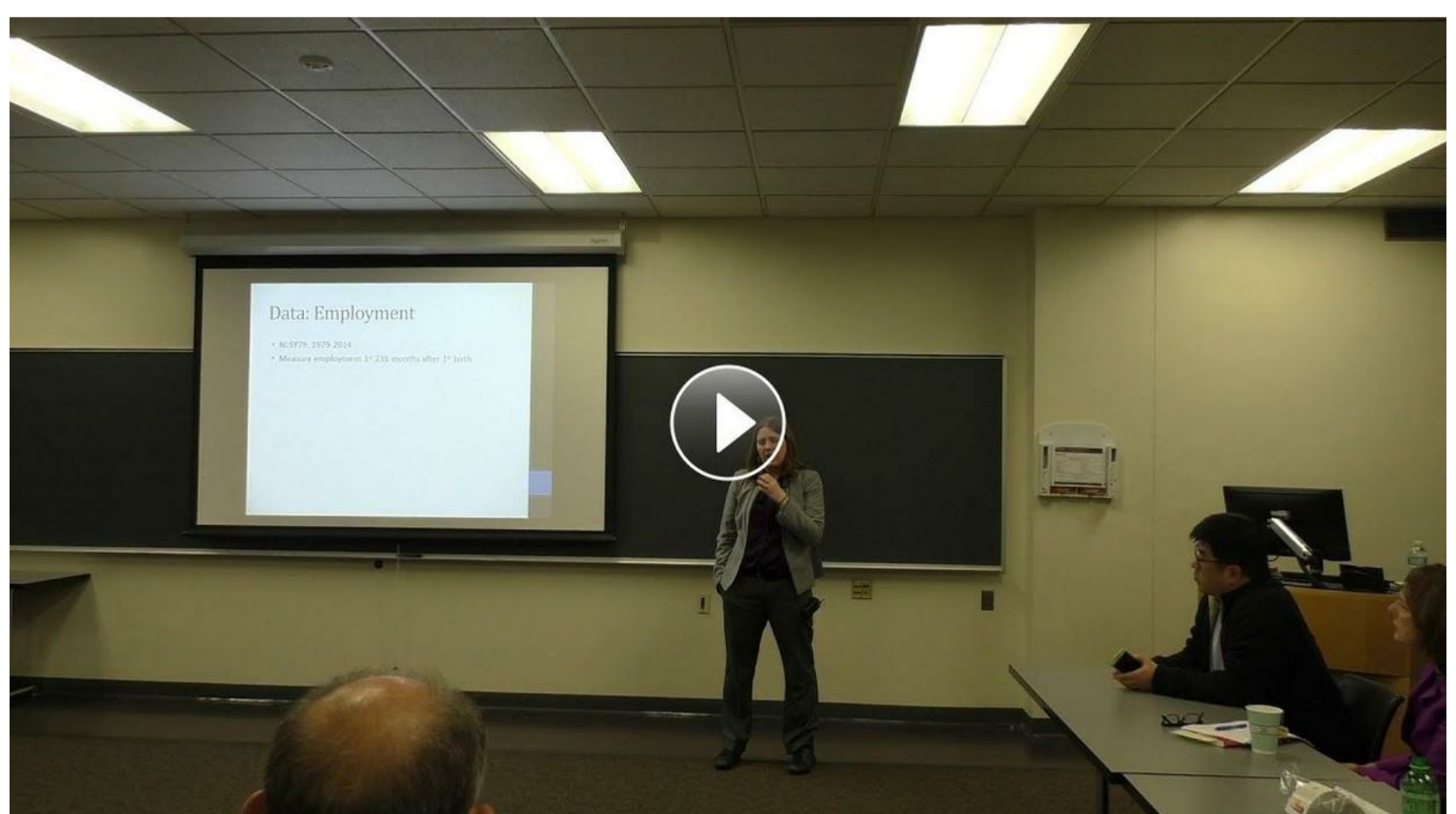


Chiwoza Bandawe



Victor Mwapasa

PSC Colloquium Video: Alexandra (Sasha) Killewald



Please contact psc_library@mailman.ssc.upenn.edu to submit news & events or with questions.